

Nanocom EVOLUTION Upgrade Manual

Important notice!

Before running the upgrade please be aware of the following:

1. If there is an SD card present in the Nanocom Evolution this must be removed before starting the upgrade process.
2. You should disconnect from the Internet during the upgrade process to avoid any automatic updates running.
3. During this upgrade process the system erases and re-programs the internal systems.

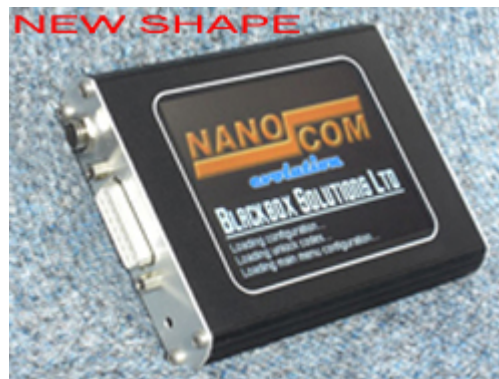
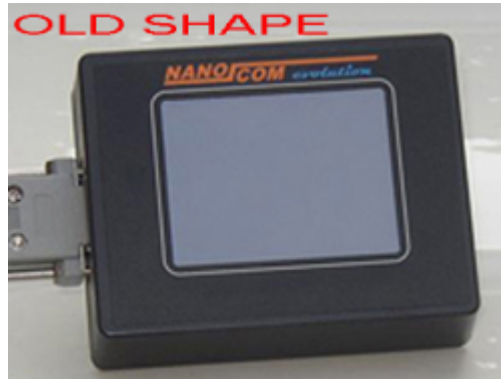
Interruption of the USB connection by any of the following can result in an unusable unit which may then need to be returned to Blackbox Solutions for repair.

Causes of interruption:

- A) Moving or removing the USB lead
- B) Connection of any other power supply to the Nanocom Evolution apart from the USB lead
- C) Loss of power to the laptop/PC during the upgrade process
- D) Running of any other programs that can interrupt the connection to the USB port

The upgrade process takes approx **7** minutes depending on the speed of the Laptop/PC so please be patient.

***CLICK ON THE IMAGE TO SELECT
YOUR UNIT:***



Nanocom Evolution (Old Shape)



The old shape Nanocom Evolution is also known as mk1 unit which relates to the large plastic body type unit.

For all upgrades you need to set the Nanocom unit into " KERNEL UPGRADE MODE" which normally done by the **SOFTWARE METHOD** , in case the upgrade fails by unknown means then there is an emergency **HARDWARE METHOD** which will allow you to carry out the the upgrade in case of the unit is not operable.

BACK

Software method Nanocom Evolution (mk1)

There are 2 different software methods to set your Nanocom mk1 into KERNEL UPGRADE MODE.

IF YOUR NANOCOM MK1 HAS NEVER BEEN UPGRADED TO [BBS1.01](#) PLEASE FOLLOW **MODE1** (use this mode if your unit has never been upgraded before and you don't get 4 icons on the main screen when powered up by usb cable)

IF YOUR NANOCOM MK1 WAS UPGRADED WITH [BBS1.01](#) IN THE PAST PLEASE FOLLOW **MODE2** (use this mode if your Nanocom unit shows 4 icons on the main screen when powered up by usb cable)

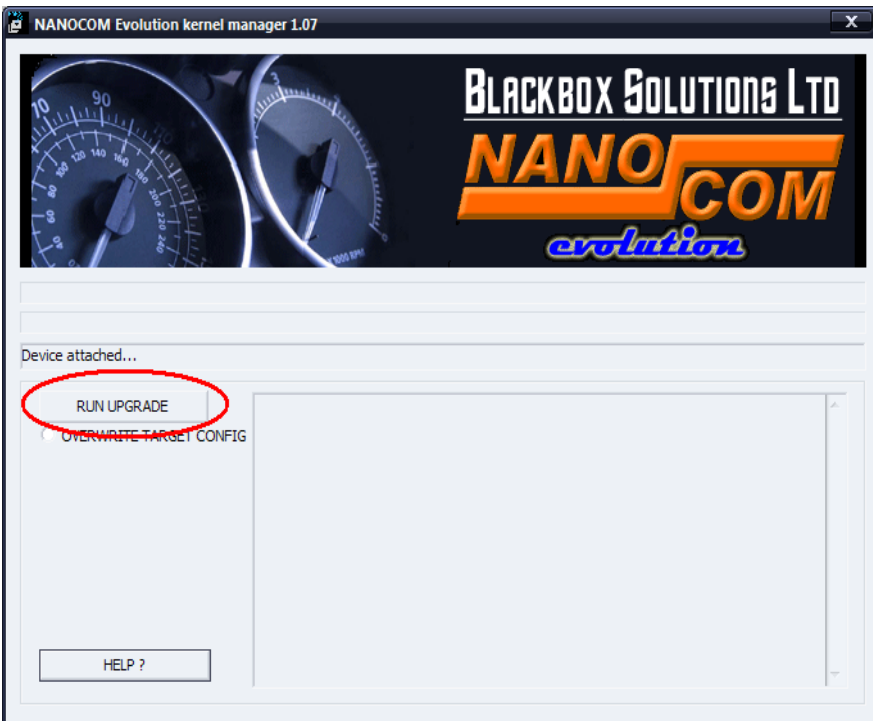
MODE1:

a) The pre BBS1_01 type firmware found on the first versions of the Nanocom Evolution has a small bug that affects Kernel upgrading from the on screen menu, which needs to be fixed. To do this, you simply Connect The Nanocom Evolution, without an SD card inserted, to your PC via the USB lead. A window will pop up on your PC showing the contents of the NC_firmware drive, copy and overwrite the file named ncset.app with the replacement supplied in the upgrade package) into the NC_firmware drive. Then disconnect the Nanocom Evolution

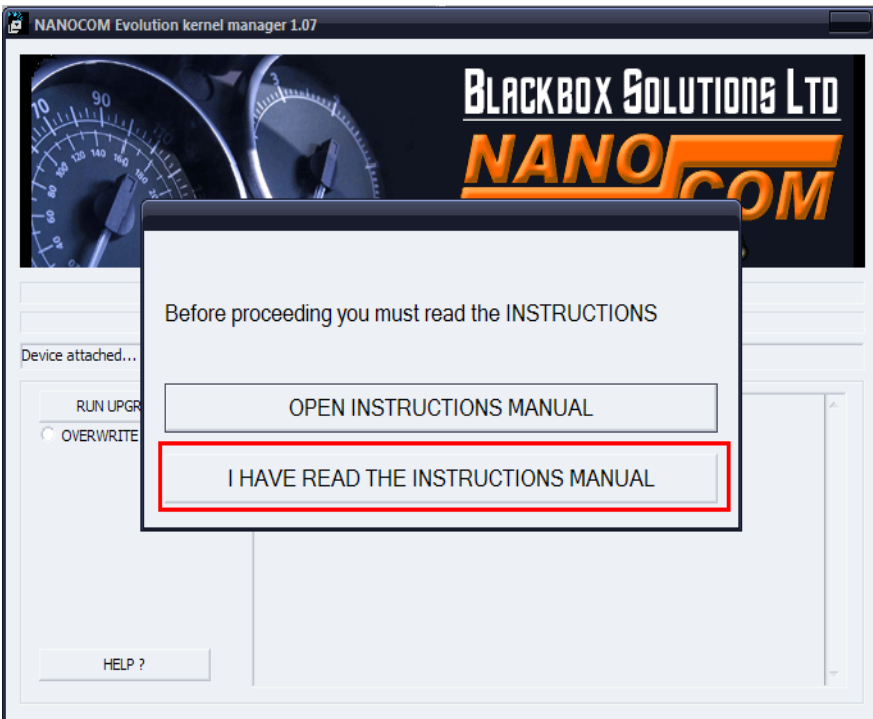
b) Put the Nanocom Evolution into Kernel Upgrade mode which can be done by powering up the unit, without an SD card, from the DC socket, then plug in the USB lead and from the Main Menu on the screen of the Nanocom Evolution Select NANOCOM, followed by Setup, Followed by KERNEL UPGRADE.

The screen will stay blank which indicates it is in upgrade mode.

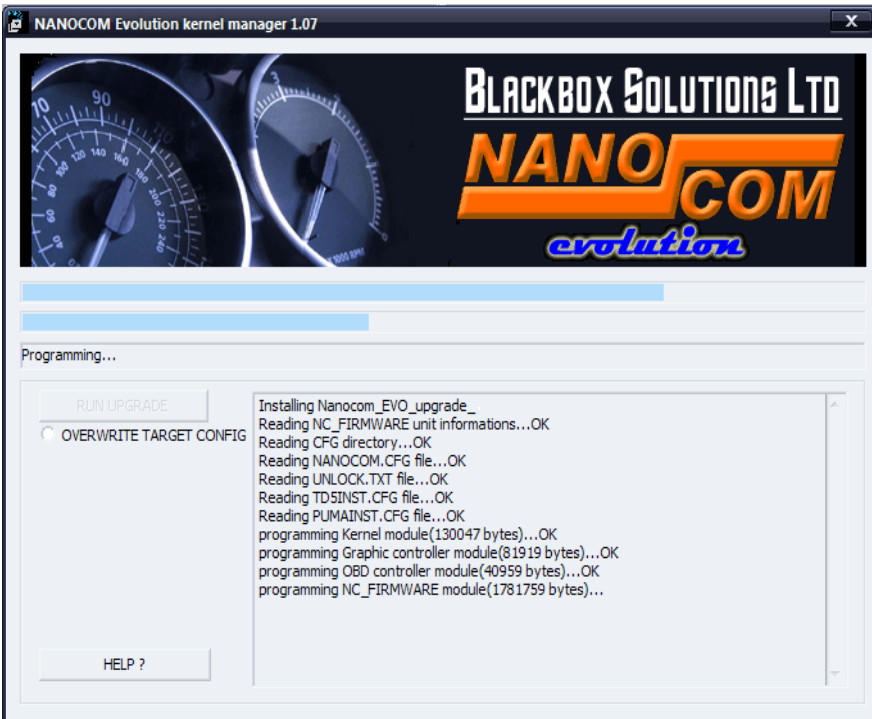
c) Run NanocomEvoKernelManager.exe



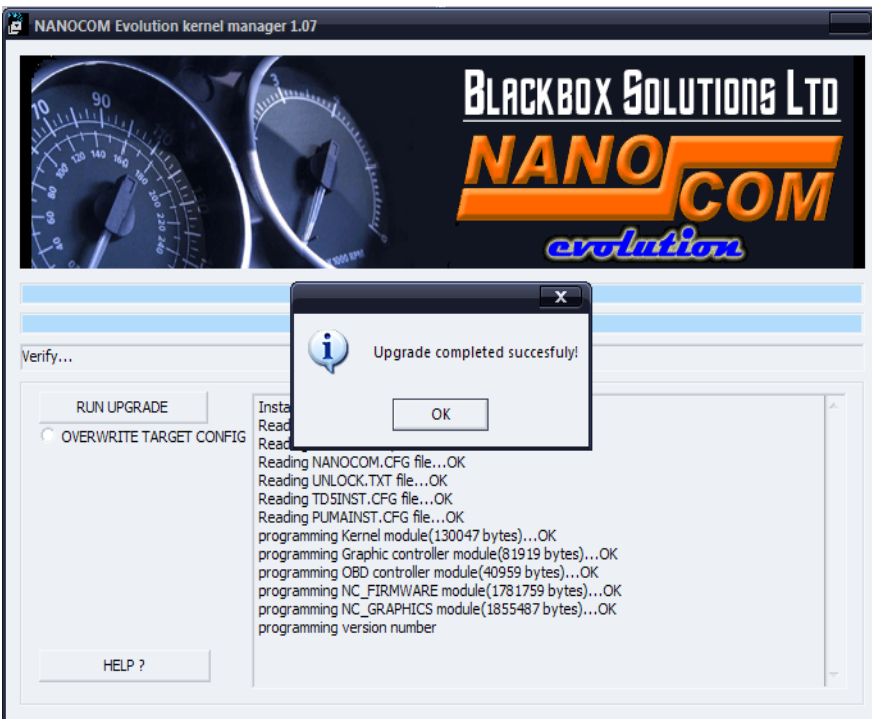
CLICK on RUN UPGRADE



AFTER YOU READ THIS MANUAL SELECT "I HAVE READ THE INSTRUCTIONS MANUAL"



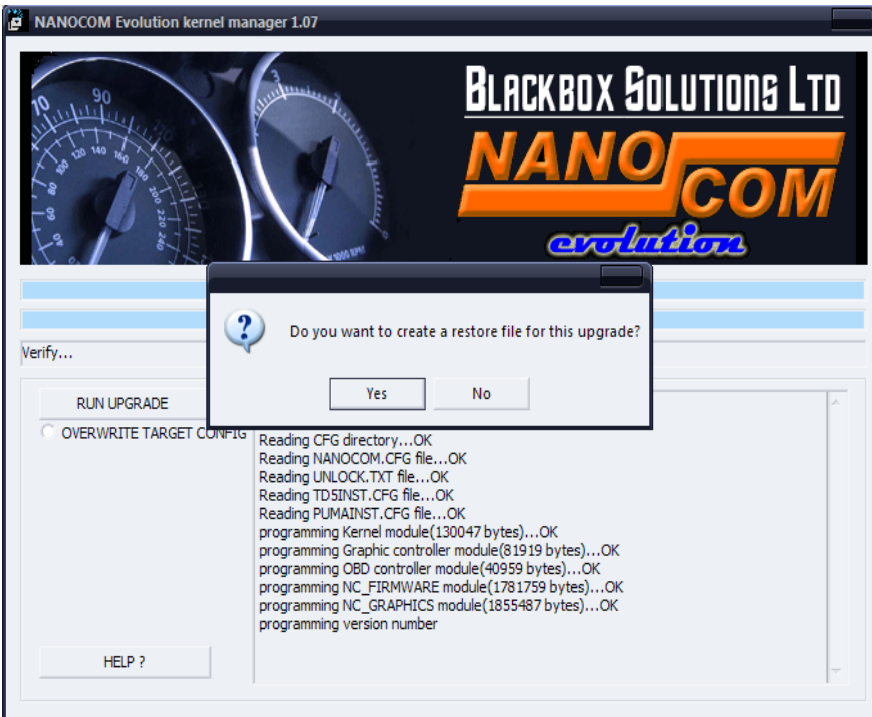
DO NOT CLOSE THIS WINDOW UNTIL PROGRAMMING PROCESS IS DONE.



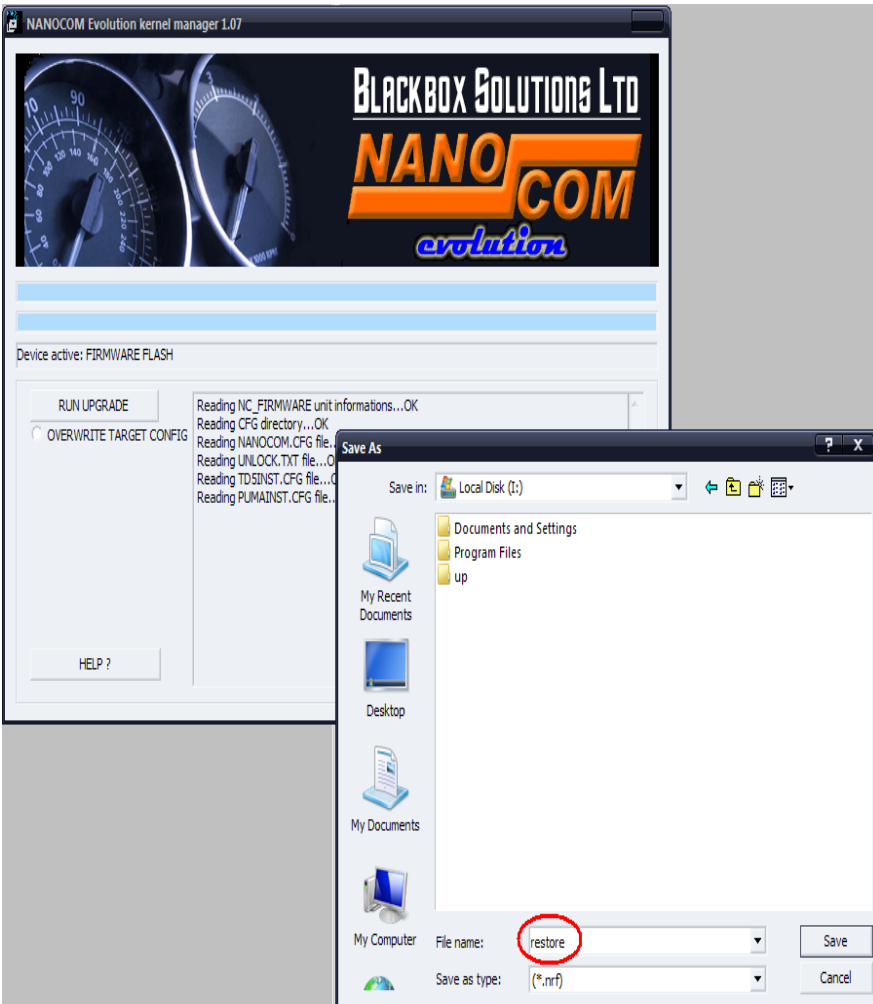
YOUR NANOCOM EVOLUTION UNIT WAS UPGRADED SUCCESSFULLY SELECT "OK"

The next screen will allow you to create a restore file for the current upgrade.

If you select "NO" then the unit can be disconnected from the usb, if you select "YES" then a restore file will be created:



Select "YES" for the restore file.



The name of the file should

not be more than 8 characters long.

NOTE: The file that was saved on your PC then it can be copied to the SD card in a folder called "NCRF" and when restore is needed just plug in the SD card and you can restore it manually from the menu or when system files are corrupted restore file will be requested automatically when unit is booted up.

You cannot restore a file created earlier or later than your current version of firmware.

After using MODE1 method you will not be able to upgrade your device the same way and you will have to use for each new upgrades the MODE2 method.

MODE2:

a) Put the Nanocom Evolution unit into Kernel Upgrade mode which is most easily done by connecting the unit (without an SD card inserted) to the PC with the USB lead, then from the menu of 4 icons appearing on the screen, click on KERNEL. The screen will stay blank that indicates it is in Kernel Upgrade Mode.



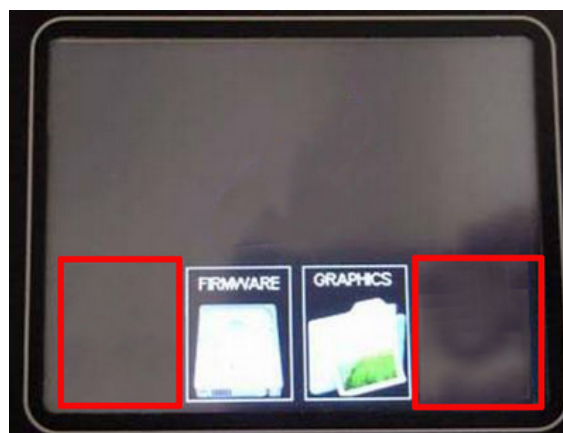
b) Run NanocomEvoKernelManager.exe

FOLLOW THE SCREENSHOTS FROM MODE1.

The Nanocom Evoluiton unit has now been upgraded and can be disconnected from the PC.

Solutions for a eventual programming failure caused by unknown or user mistakes:

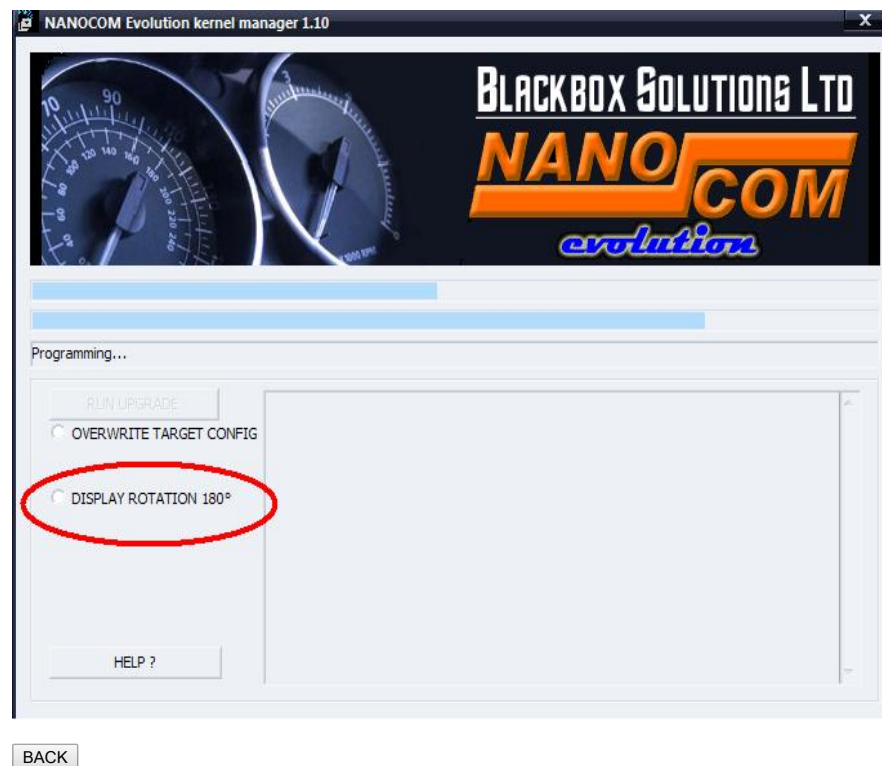
Sometimes programming fails (stuck) because the unit was disconnected from PC during programming or because of an interference with other software running on PC, in many cases the unit can still be operable, most failures that we have seen is the upgrade software failing to program the graphics chip which will partially program the graphic interface therefore when you boot up the unit will have only 2 icons "firmware" and "graphics" shown only, at this stage you can still TAP on the empty space to the left and right of these icons and commands will be accepted. What you have to do is TAP on the empty space on the left side next to "firmware" icon where "kernel" icon place would be and your unit will go blank indicating its in kernel upgrade mode, check image below that was modified to look like a failed graphics chip programming.



The other 2 failures are when "OBD Controller" fails to program in this case you disconnect the USB cable then reconnect it and follow the upgrade procedure to try again. If the "firmware" programming fails then you most likely have to do a hardware upgrade in order to have your unit working again, that's why we advice that the upgrade **must** not be interrupted and to avoid interference caused failures to close all unnecessary software or updates running on the PC.

180° DEGREE SCREEN ROTATION

From upgrade BBS1.06 you will be able to use your Nanocom Evolution with the display rotated 180° which is suitable for cars that are LHD where the OBD socket is on the passenger side. When you open Kernel Manager you need to tick the "display rotation 180°" option and then run the upgrade. Please see screenshot below.



Hardware method Nanocom Evolution (mk1)

The Hardware method will require to open the unit, therefore some technical skills are needed to carry out this operation successfully.

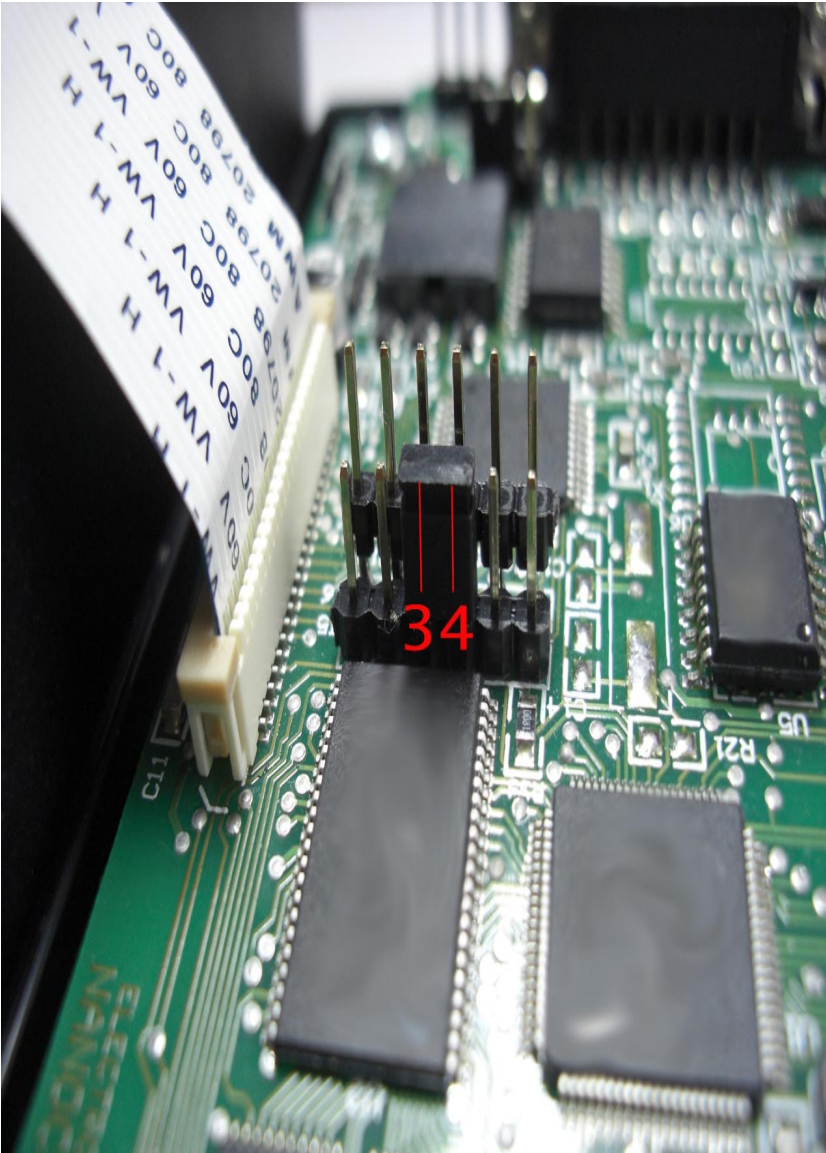
If you are not confident you can do this please ask for help from someone with more technical experience.

IMPORTANT NOTE: This method will invalidate your warranty if you have one.

a) At the back of the unit you will find one screw in each corner, unscrew them and open the unit very carefully as there is a display ribbon which has to stay intact and not to be damaged. Avoid tugging on the ribbon.

b) Locate the 2 sets of 6 pins right next to the ribbon slot. On the lower 6 pin set you will find a black jumper on pins 3 and 4, remove this jumper then insert USB cable into USB port then run BBS upgrade software. When the software upgrade is done successfully remove USB cable put the jumper back on pins 3 and 4 and close the unit. Now the unit is ready to be powered up.

NOTE: After you remove the jumper and connect the USB cable the unit will not give any sign of powering up and will be silent and the display will stay blank (this is normal at this stage).



NOTE: If the jumper is **not** on the correct pins the unit will not work and may cause other problems and we cannot be held responsible for any damage caused by not consulting the image and understanding the correct position of the jumper.

[BACK](#)

Nanocom Evolution (New Shape)



The new shape Nanocom Evolution is also known as mk2 unit which relates to the slim metallic body type.

For all upgrades you need to set the Nanocom unit into "KERNEL UPGRADE MODE" which normally done by the **SOFTWARE METHOD** , in case the upgrade fails by unknown means then there is an emergency **HARDWARE METHOD** which will allow you to carry out the the upgrade in case of the unit is not operable.

BACK

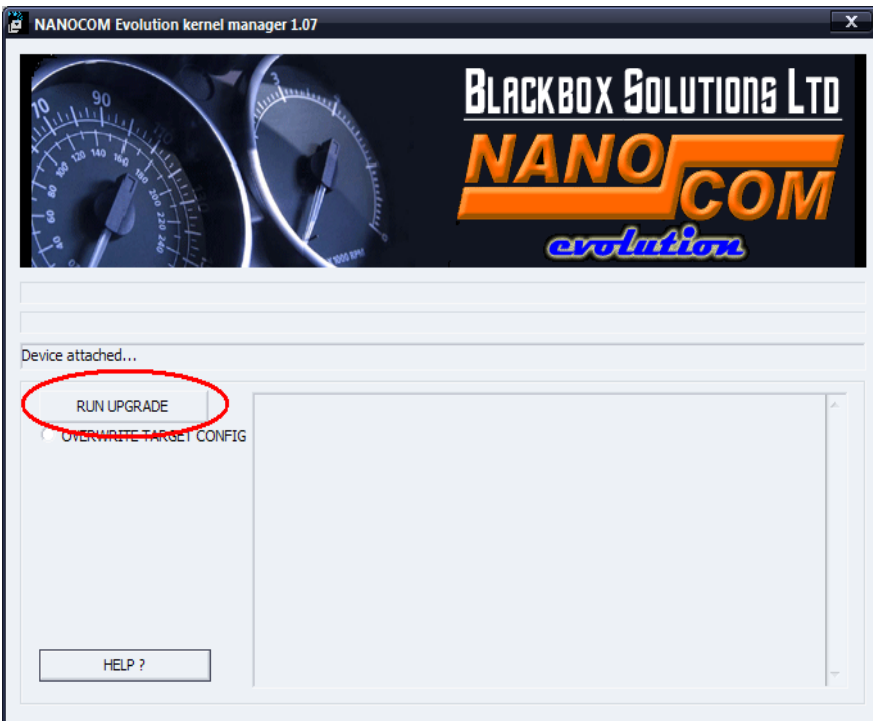
Software method Nanocom Evolution (mk2)

The software method for the Nanocom Evolution mk2 is done in 2 easy steps:

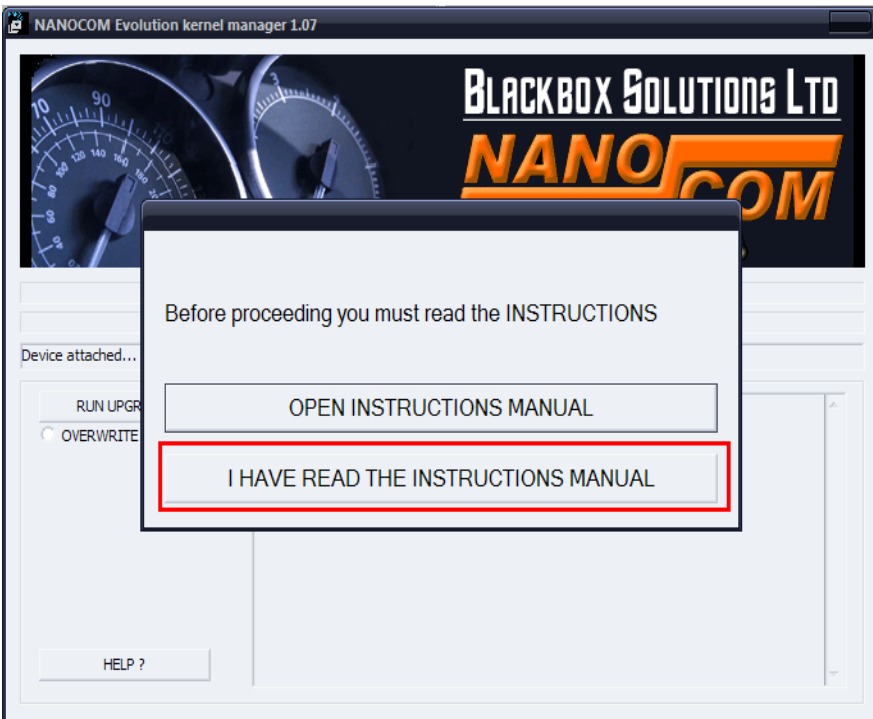
a) Put the Nanocom Evolution unit into Kernel Upgrade mode which is most easily done by connecting the unit (without an SD card inserted) to the PC with the USB lead, then from the menu of 4 icons appearing on the screen, click on KERNEL. The screen will stay blank that indicates it is in Kernel Upgrade Mode.



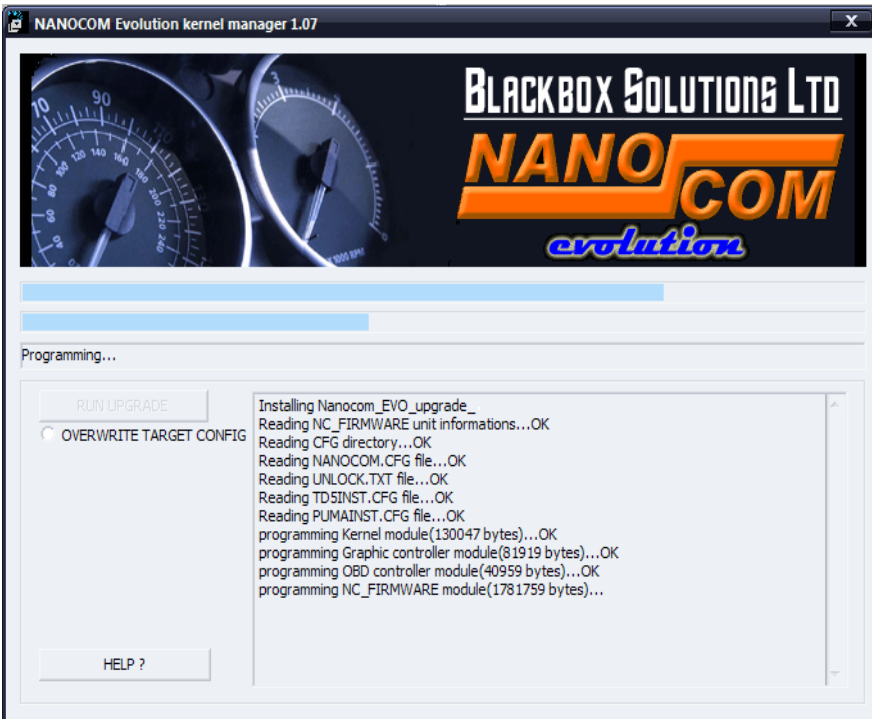
b) Run NanocomEvoKernelManager.exe



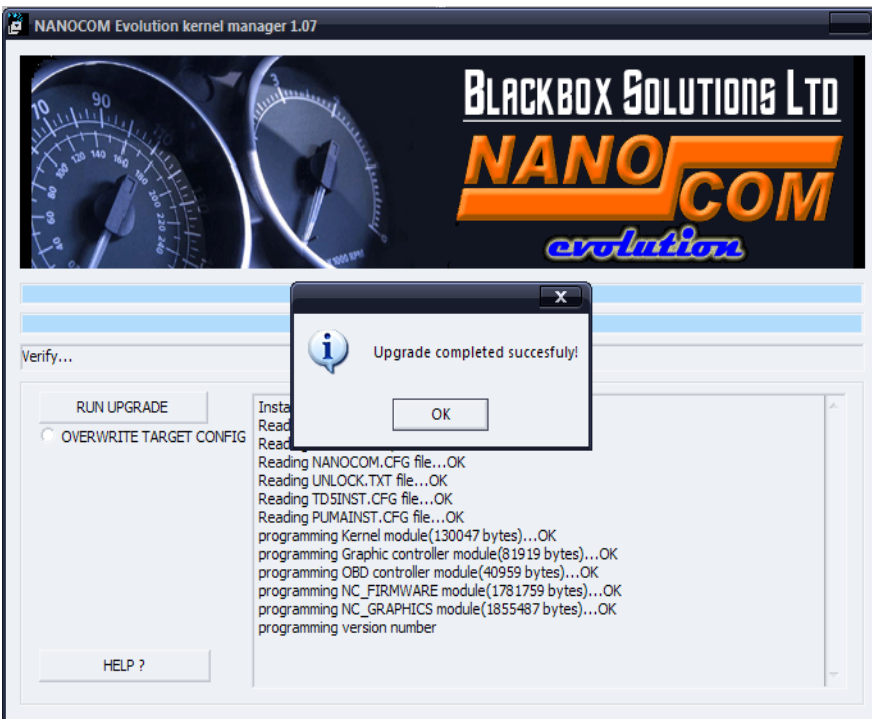
CLICK on RUN UPGRADE



AFTER YOU READ THIS MANUAL SELECT "I HAVE READ THE INSTRUCTIONS MANUAL"



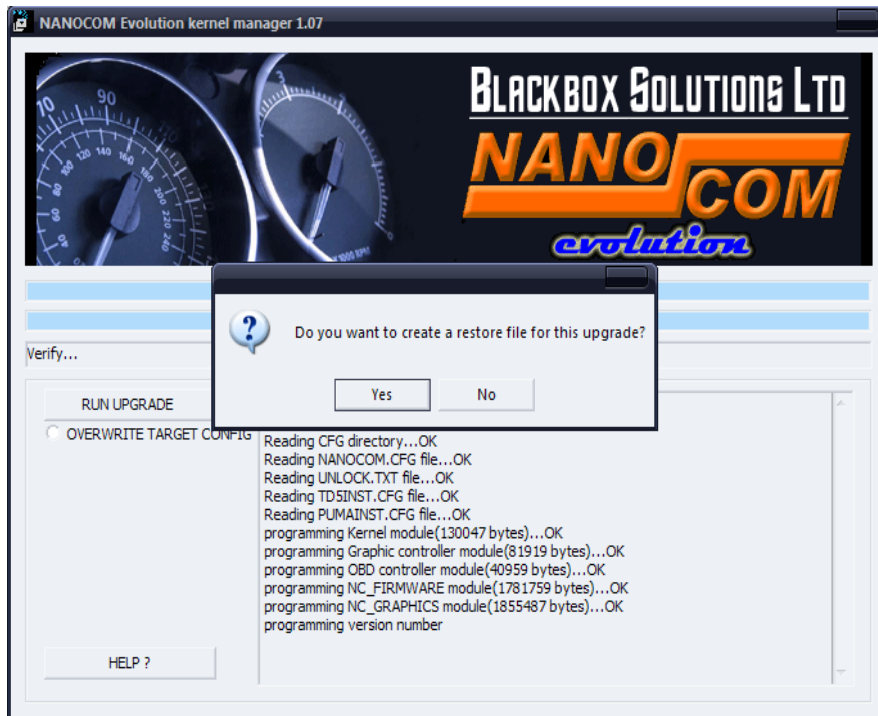
DO NOT CLOSE THIS WINDOW UNTIL PROGRAMMING PROCESS IS DONE.



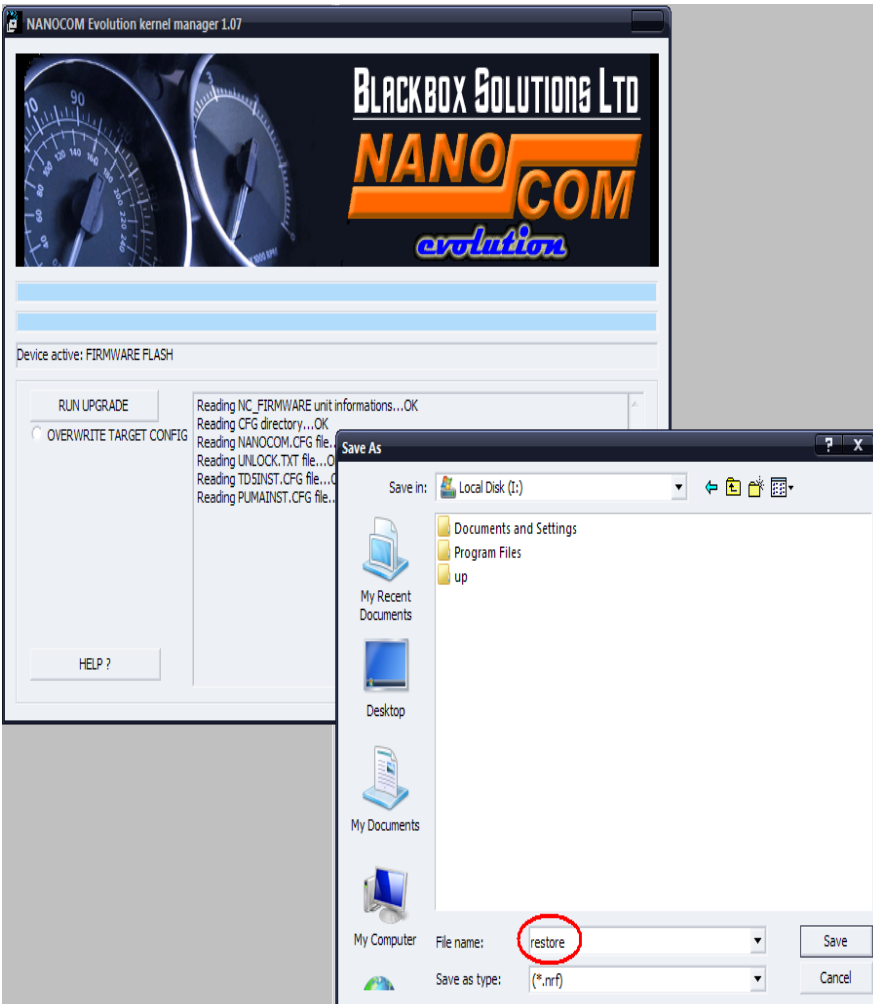
YOUR NANOCOM EVOLUTION UNIT WAS UPGRADED SUCCESSFULLY SELECT OK

The next screen will allow you to create a restore file for the current upgrade.

If you select "NO" then the unit can be disconnected from the usb, if you select "YES" then a restore file will be created:



Select "YES" for the restore file.



The name of the file should

not be more than 8 characters long.

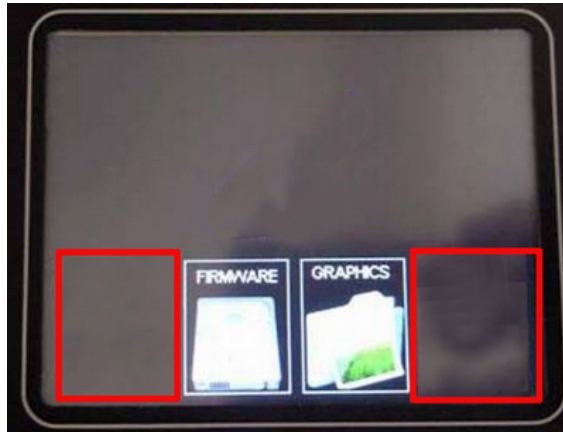
NOTE: The file that was saved on your PC then it can be copied to the SD card in a folder called "NCRF" and when restore is needed just plug in the SD card and you can restore it manually from the menu or when system files are corrupted restore file will be requested automatically when unit is booted up.

You cannot restore a file created earlier or later than your current version of firmware.

Solutions for a eventual programming failure caused by unknown or user mistakes:

Sometimes programming fails (stuck) because the unit was disconnected from PC during programming or because of an interference with other software running on PC in many cases the unit can still be operable, most failures that we have seen is the upgrade software failing to program the graphics chip which will partially program the graphic interface therefore when you boot up the unit will have only 2 icons "firmware" and "graphics" shown only, at this stage you can still TAP on the empty space to the left and right of these icons and commands will be accepted. What you have to do is TAP on the empty space on the left side next to "firmware" icon where "kernel" icon place would be and your unit will go blank indicating its in kernel

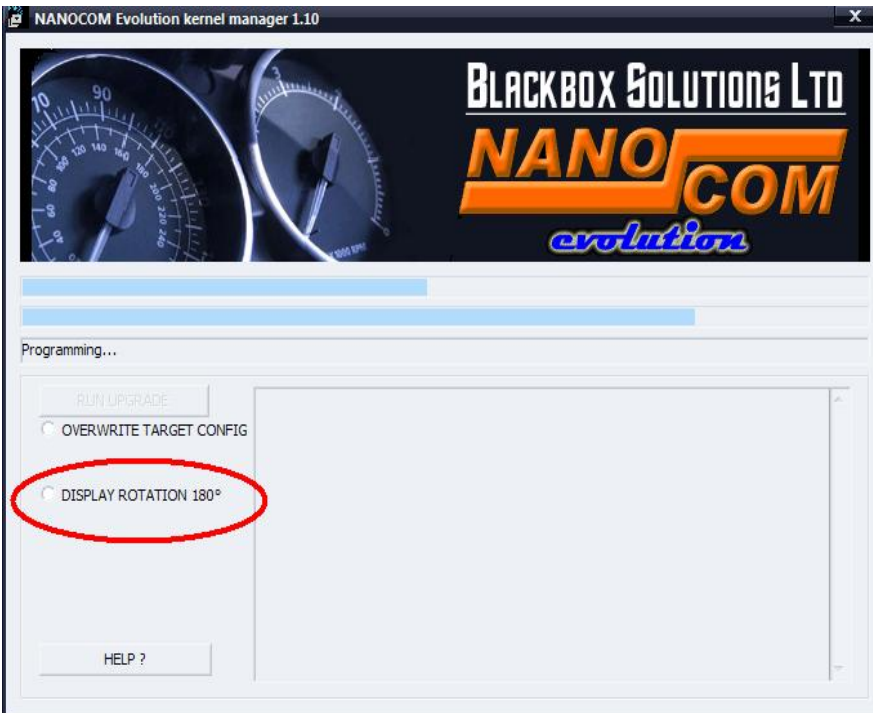
upgrade mode, check image below that was modified to look like a failed graphics chip programming.





The other 2 failures are when "OBD Controller" fails to program in this case you disconnect the USB cable then reconnect it and follow the upgrade procedure to try again. If the "firmware" programming fails then you most likely have to do a hardware upgrade in order to have your unit working again, that's why we advice that the upgrade **must** not be interrupted and to avoid interference caused failures to close all unnecessary software or updates running on the PC.

180° DEGREE SCREEN ROTATION

From upgrade BBS1.06 you will be able to use your Nanocom Evolution with the display rotated 180° which is suitable for cars that are LHD where the OBD socket is on the passenger side. When you open Kernel Manager you need to tick the "display rotation 180°" option and then run the upgrade. Please see screenshot below.

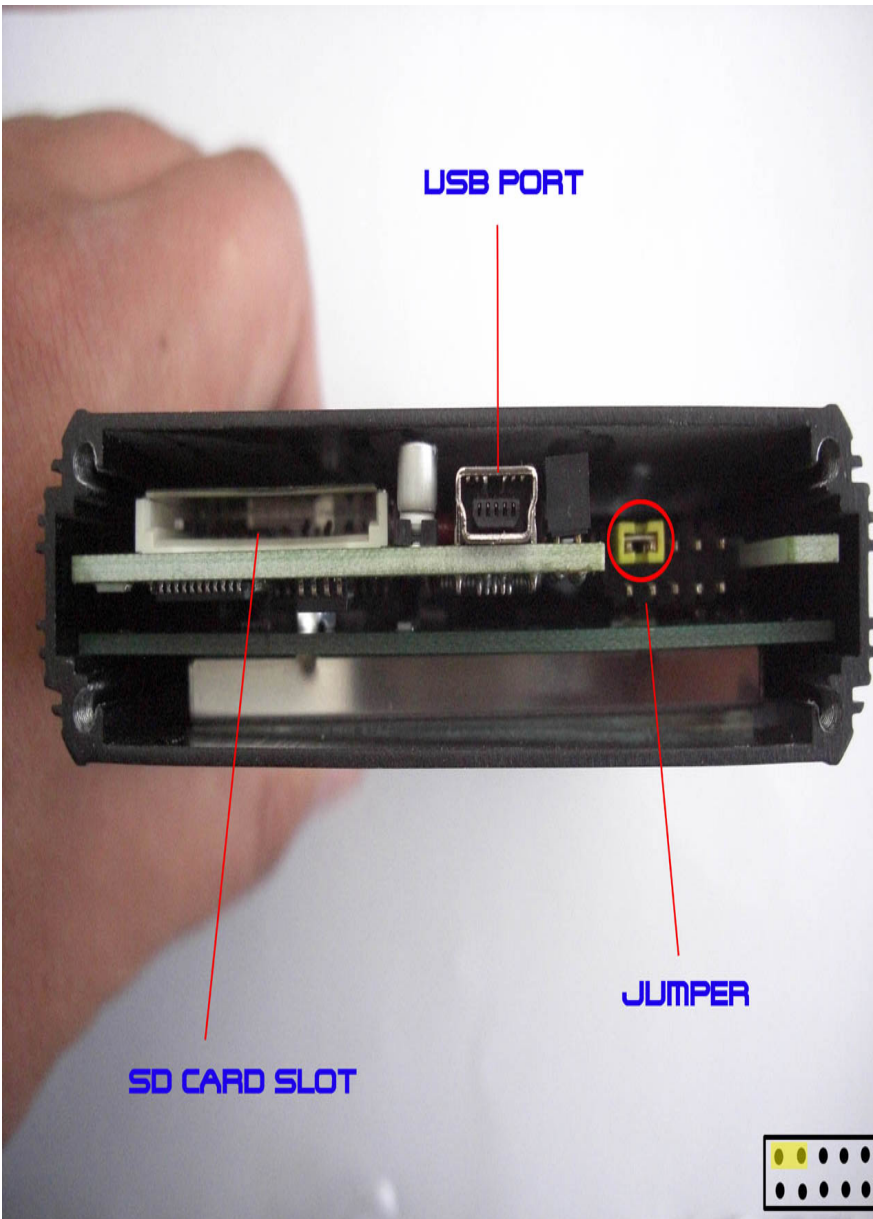


Hardware method Nanocom Evolution (mk2)

If your Nanocom Evolution BBS software upgrade failed during programming and you get a blank screen with beeping sound when you boot up the unit, then you have a second option to run the upgrade by removing the  jumper  from the inside of the unit which will cause the unit to be in kernel upgrade mode and allow the BBS upgrade software to run again.

a) You will need to open the side of the unit where the SD-card slot and USB port is and locate the yellow jumper found on the first two pins next to the USB port, remove the jumper by pulling upwards and be careful not to drop it between the case and the circuit board as it will require to open both sides to recover the jumper, best is to use a long nose pliers.

b) After the jumper is removed connect it to the PC with the USB cable and run the BBS upgrade software . When the upgrade is done successfully re insert the jumper back on the first two pins and plug in the USB cable and see if the unit boots up properly and you can see the 4 icons on the screen.



NOTE: If the jumper is **not** on the correct pins the unit will not work and may cause other problems and we cannot be held responsible for any damage caused by not consulting the image and understanding the correct location of the jumper.

BACK